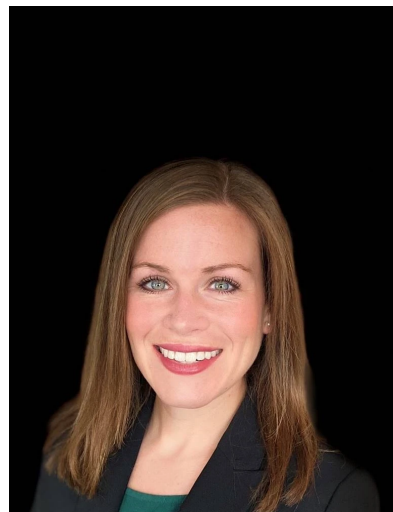


ANNIE E. BODEAU

Annie joined Fisher Bren & Sheridan, LLP in 2020 after spending over two years in the court room as a law clerk for the Honorable Judge Kevin S. Burke in Hennepin County District Court, where she gained experience in all areas of civil litigation and oversaw cases from filing through post-judgment and remand. Annie earned her J.D. from the University of St. Thomas School of Law, where she honed her research and writing skills as a member of the St. Thomas Law Journal and advocated for individuals while participating in the school's elder law clinic. During law school Annie was also a law clerk at an insurance defense law firm in Minneapolis.

Annie is a proud Minnesotan and prioritizes giving back to her community. After graduating with her B.A. in English from St. Olaf College, she spent one year working for AmeriCorps as an elementary school literacy specialist in the Minneapolis Public School District. She continues to volunteer as a high-school academic coach. Annie ran on her college's track and cross-country teams and continues to train and race competitively in her free time.



Contact Information:

Annie E. Bodeau
Main: (612) 332-0100
Fascimile: (612) 332-9951
abodeau@fisherbren.com

Legal Administrative Assistant:

Karen Carpenter
(612) 902-2755
kcarpenter@fisherbren.com

Legal Administrative Assistant:

Tricia Kreie
(612) 902-2754
tkreie@fisherbren.com